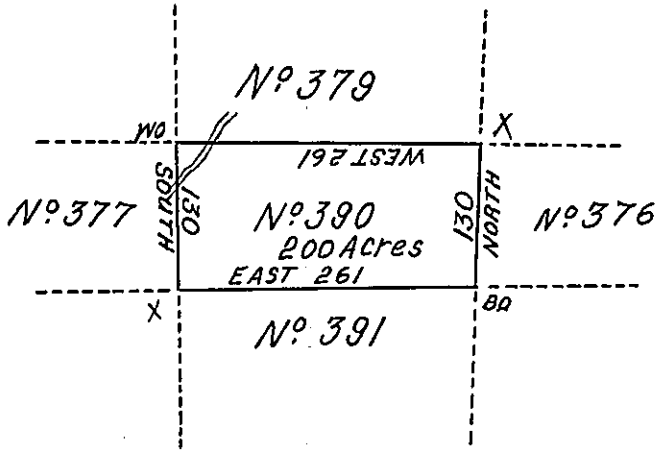


drawn 17th Feb^y
1809 By Thomas
Boude Heir at Law
to Samuel B. Boude
Lieut. deceased.

(paper fastened to
original)



In pursuance of an Act of General Assembly of the State of Pennsylvania passed the 24th day of February 1785, entitled an Act for directing the mode of distributing the Donation Lands promised the troops of this Commonwealth and by order of the Surveyor General, with the approbation of the hon^{ble} Executive Council, I have surveyed on the 8th day of Nov^r 1785 the above described Tract of two hundred Acres of land & allowance of Six p^r Cent for Roads &c N° 390 Situate in District N° 2 on the West side of the Allegheny River in Westmoreland County.

To John Lukens Esq^r }
Surv^r Gen^l }

Surveyed by
John Henderson D. S.

IN TESTIMONY that the above is a copy of the original remaining on file in the Department of Internal Affairs of Pennsylvania, made conformably to an Act of Assembly approved the 16th day of February, 1833, I have hereunto set my Hand and caused the Seal of said Department to be affixed at Harrisburg, this Twenty-first day of March 1907

Isaac P. Brown
Secretary of Internal Affairs.